

Canada

In Out Ski Resort

British Columbia

IPD

INTERNATIONAL
PROPERTY

www.ipdpropertygroup.com



Your brand new chalet will feel like it's been there for over a century – classic and timeless, yet refined and richly appointed with modern amenities and expert craftsmanship. Personalized through and through, from the plans to the interior designs, you decide what defines this mountain chalet as yours and yours alone.

2545 Sq. Ft. | 4 Bed / 3.5 Bath



Lower



Main



Upper

2091 Sq. Ft. | 3 Bed / 3.5 Bath



Lower



Main



Upper

1623 Sq. Ft. | 3 Bed / 3.5 Bath



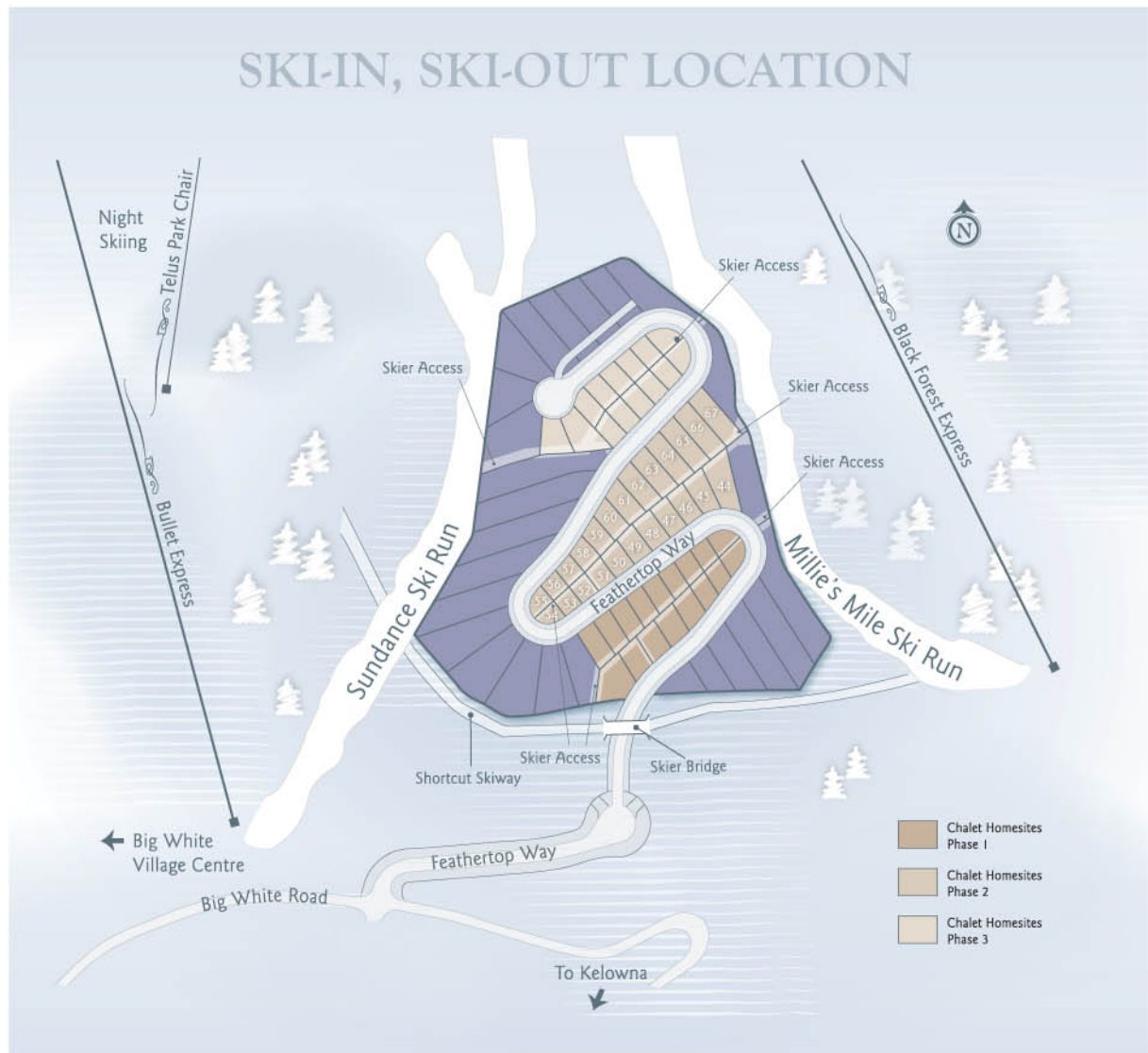
Lower



Main



Upper



Every chalet homesite touches a ski easement. Everything the mountain offers – from its champagne powder slopes, bustling village, and endless winter activities – lies just beyond your front door.

Chalet Homesites - Exterior and Interior Features & Finishes

Bronze Package

EXTERIOR

- * Local quarried stone and rock details
- * Durable cedar siding in two or more styles
- * Stunning wooden soffits
- * BBQ outlets on decks
- * Prewired Hot Tub
- * Warm natural exterior colour combinations selected by our award winning designer to enhance neighbourhood aesthetics
- * Stepped back rooflines
- * Dark vinyl windows
- * Covered entrances, decks, and patios
- * Ski entrances and ski lockers beside groomed ski trail
- * Wood garage doors
- * Exterior pot lighting
- * Solid wood entry door

INTERIOR

- * Open concept "Great Room" design
- * Huberton Forge inspired wrought iron and amber glass light fixtures
- * Solid wood interior doors and trims
- * Slate floors in entrances and bathrooms
- * Wood plank floor in Kitchen/Dining Room
- * Wood cabinetry in Amber or Espresso colour schemes
- * Dual compartment kitchen sink with pull down vegetable sprayer
- * Whirlpool designer series appliance package
- * Eat-In bar seating with oversized corbel suppourts
- * Gas Flash Instantaneous hot water system
- * Staircases with open concept design
- * Half kitchen slate backsplash
- * Black metal spindles and accents
- * Spackle ceiling
- * Soaker tubs with full height slate surround
- * 8ft Ceilings

Silver Package

* Upgrades from Bronze Package

EXTERIOR

- * Commanding entranceways with distinctive light fixtures and solid wood entry door
- * Stucco accents
- * Stunning wooden soffits with purlins
- * Wood windows
- * Tapered stone pillars
- * Decorative truss and timber details

INTERIOR

- * "Chateau" design fireplaces with slate and stone surrounds and wood mantles
- * Hand-Crafted "furniture finish" solid wood interior doors and trims
- * Wood plank floors in Kitchen, Dining Room, and Main Living Room
- * Dual compartment, extra deep kitchen sink with pull down vegetable sprayer
- * Full kitchen slate backsplash in patchwork pattern with copper medallion
- * 9ft Ceilings with vaulted portion on top floor

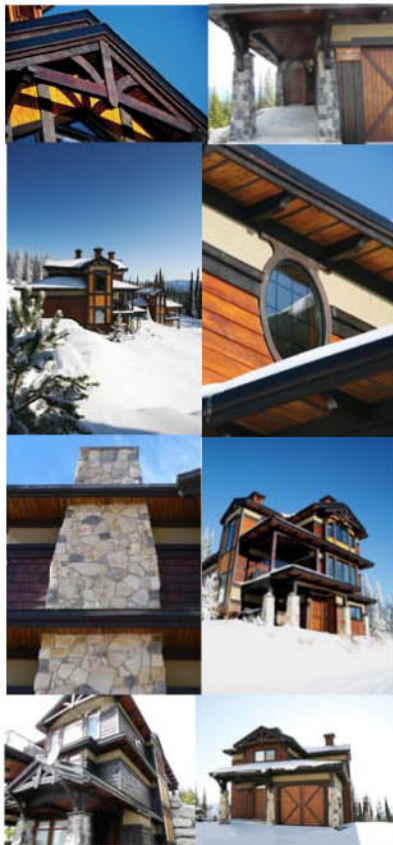
Chalet Homesites - Exterior and Interior Features & Finishes

Gold Package

* Upgrades from Silver Package

EXTERIOR

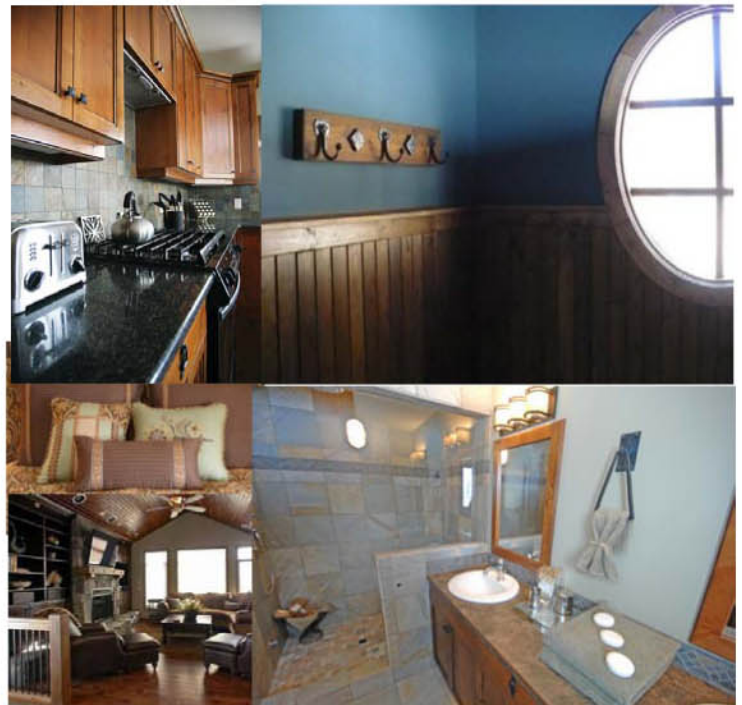
- * Eyebrow or Transom window detail
- * Curved purlins and arched beams
- * Stucco bands under rooflines
- * Heavier timber and trims with more trusses
- * Massive tapered stone pillars
- * Cedar shakes and wood panel siding accents
- * Exceptional exterior lighting package
- * More extensive rock chimneys, as per plan



Exterior Details

INTERIOR

- * Matching knotty Alder Wood doors, floors, cabinetry and trims.
- * Solid wood closet doors
- * Feathertop Signature Finishing on cabinetry
- * Under cabinet lighting in master bath
- * Hand pounded, wrought iron spindles and accents
- * "French Chateau" inspired antique copper finish ceiling in boot room with wainscoting
- * Solid slab granite countertops in Kitchen
- * "Parisian Snowflake" copper finish inlay feature tile in entry
- * Master suite - "Aromatherapy" Slate steam shower, 10mm glass, rain pan, and wand



Interior Details

IPD Property Group - International Property Consultants

International Property Consultants and Real Estate Specialists - Our team have been active in the field of real estate sales and marketing for over 20 years.

IPD offer independent consultation services to clients worldwide providing professional advice, services and full price negotiation for buyers and investors. Our highly valued and trusted real estate developer and associated business consultant network works towards a successful outcome for IPD clients. Our team of advisors act in an ethical and transparent manner ensuring all enquiries we accept are processed in a professional and timely manner.

IPD partner with internationally recognised organizations who provide top-rated residential, commercial and retail properties for sale as investments, personal use and as corporate assets.

We operate in well established to the emerging markets, and have a network of international agents that work together to enable IPD's clients to gain access to up-to-date market information that will give them a competitive advantage to purchase unique luxury lifestyle and investment properties and real estate with confidence and peace of mind.

IPD Services

- Real Estate Consultancy
- REIT Investments
- Guaranteed Income Property
- Currency Exchange
- SIPP Property Investments
- Mortgage Services
- Guaranteed Buy Back Property
- Guaranteed Interest
- Economic Citizenships

Key advantages of the IPD Property Group

- Pre-defined entrance / exit strategies
- Comprehensive due diligence processes
- Independent product endorsements
- Product inspection tours
- Minimise risk exposure
- Below market value product base
- Local rental management teams in place
- Quality proven property developer base
- **Buy DIRECT** - no chains
- In depth product information
- IPD are not sub-agents
- IPD negotiates best price for clients
- Tax Havens Locations
- Economic Citizenships / Dual Citizenships
- Emphasis on both long standing investment markets as well as new emerging markets
- Currency and Mortgage provision
- Flexible payment plan structures
- International brand associates
- 20+ years of real estate experience
- Focused on integrity and delivery



www.ipdpropertygroup.com

IPD Property Group

IPD International Property Consultants

Head Office:

1673 Richmond Street, Suite 305,
London, Ontario, N6G 2N3, CANADA

<http://www.ipdpropertygroup.com>

<http://www.ipdpropertyinvestment.com>

<http://www.internationalpropertydirectory.com>

<http://www.internationalpropertydevelopers.com>

<http://www.internationalpropertyforum.com>

Telephone (+1) 519 204 0274 or (+1) 519 200 7004

Sales agent locations:

North America

South America

Europe

Middle East

Africa

Central America

Caribbean

IPD is a Canadian registered company.
Ontario Master Business Licence No. 170038848.
Registered Address: London,
Ontario, N6G 4V4, CANADA

As an introducer IPD supplies our services to buyers and investors free of charge. All monies are passed directly between seller and buyer. We go to great lengths to supply information in as accurate form as possible but we cannot hold any responsibility as relates to any transaction that takes place. We recommend that buyers / investors or buyers carry out their own due diligence procedures prior to making any financial commitment. IPD provides inspections tours and will make arrangements for accommodation and flights in conjunction with sellers. IPD also has the ability to provide assisted tours depending on location and dates required.